



FSC Conversion Remedy Procedure Version 1-0

Public consultation for draft 1-0

Webinar – April 2020

OVERVIEW

1. BACKGROUND INTRODUCTION

2. FIRST DRAFT OF FSC CONVERSION REMEDY PROCEDURE

3. INTRODUCTION OF THE PUBLIC CONSULTATION

4. NEXT STEPS

5. OPEN DISCUSSIONS (40 Mins)

OVERVIEW

1. BACKGROUND INTRODUCTION

2. FIRST DRAFT OF FSC CONVERSION REMEDY PROCEDURE

3. INTRODUCTION OF THE PUBLIC CONSULTATION

4. NEXT STEPS

5. OPEN DISCUSSIONS (40 Mins)

HISTORY OF DISCUSSIONS ON CONVERSION

**FSC Plantations
Review
– Technical Phase –
Review of FSC
Conversion Policy**

2008 - 2009



MOTION 18



FSC® General Assembly 2014
Seville, Spain, 7-14 September

MOTION 12



FSC® General Assembly 2017
Vancouver, Canada, 8-13 October

MOTION 7

Working
Group

Technical
Working
Group

MOTION 7 IMPLEMENTATION

Working
Group

Policy on Conversion

- 1. 1994 cut-off date:** To retain, remove or change the rules to address past conversion.
- 2. Principles for compensation** on past conversion, in terms of:
 - a) restoration and/or conservation of environmental values
 - b) restitution of socio-economic values
- 3. Concept of acceptable conversion** as defined under current FSC rules.

Technical
Working
Group

Operationalize the Policy

- 1. Criteria, indicators and thresholds** for conversion across the normative framework. **Instructions for Standard Developers** to address any revised IGIs on conversion in NFSS and INS
- 2. Develop a compensation procedure and proposals for verification**
- 3. Draft text for a possible motion to the 2020 General Assembly** to reword FSC Forest Management Standard Principles & Criteria

MOTION 7 TECHNICAL WORKING GROUP

Technical
Working
Group



M7 TECHNICAL WORKING GROUP MEMBERS

Name	Background
Jamie Lawrence	Forest Economy Lead, The Nature Conservancy (TNC)
Karen Kirkman	ESG Consultant based in South Africa
Michael Allen Brady	Principal Scientist & Team Leader, Value Chains, Finance and Investment, Center for International Forestry Research (CIFOR)
Vera Lex Engel	Associate Professor, São Paulo State University (UNESP)

MOTION 7 WG MEMBERS

Working
Group

M7 WORKING GROUP MEMBERS

Name	Organization	Chamber	Country
Amanda Naismith	New Forests	ECON-N	US
Francisco Javier Rodriguez Aspillaga	CMPC celulosa	ECON-S	Chile/LATAM
Annika Terrana	WWF	ENV-N	US
Michal Zrust	Individual	ENV-S	Indonesia/ Asia Pacific
Marcus Colchester	Individual	SOC-N	UK
Verma Dharam Pal Singh	Consultant	SOC-S	India/ Asia Pacific

OVERVIEW

1. BACKGROUND INTRODUCTION

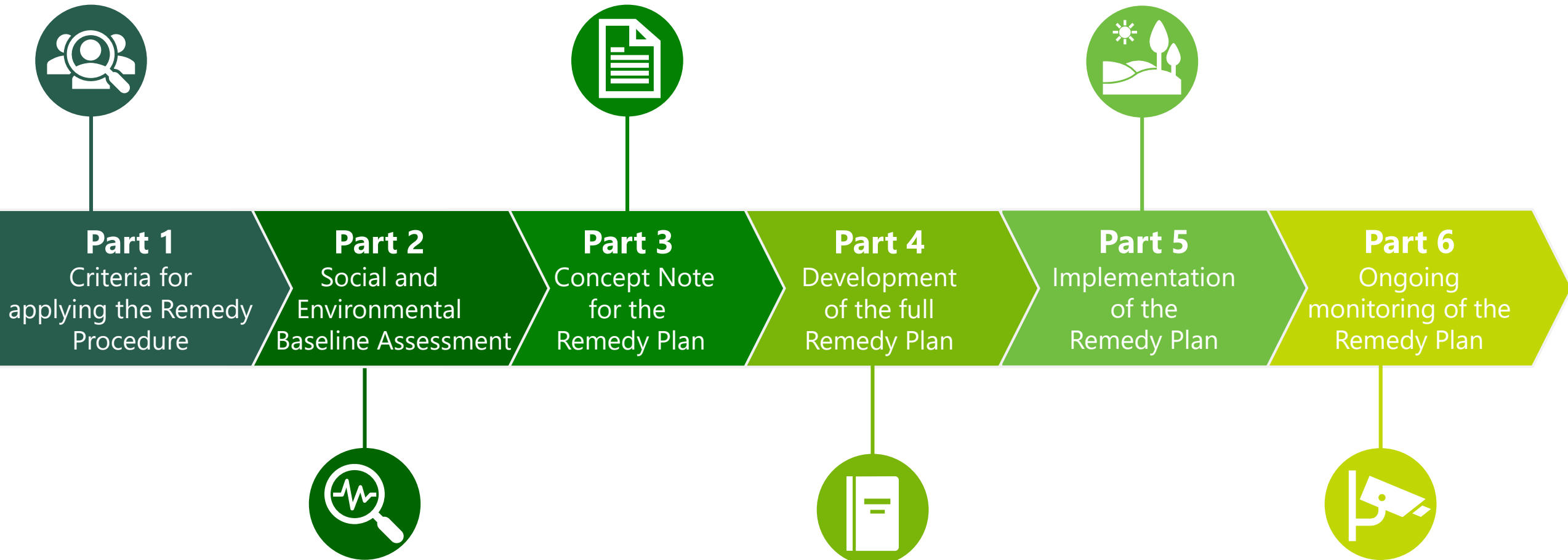
2. FIRST DRAFT OF FSC CONVERSION REMEDY PROCEDURE

3. INTRODUCTION OF THE PUBLIC CONSULTATION

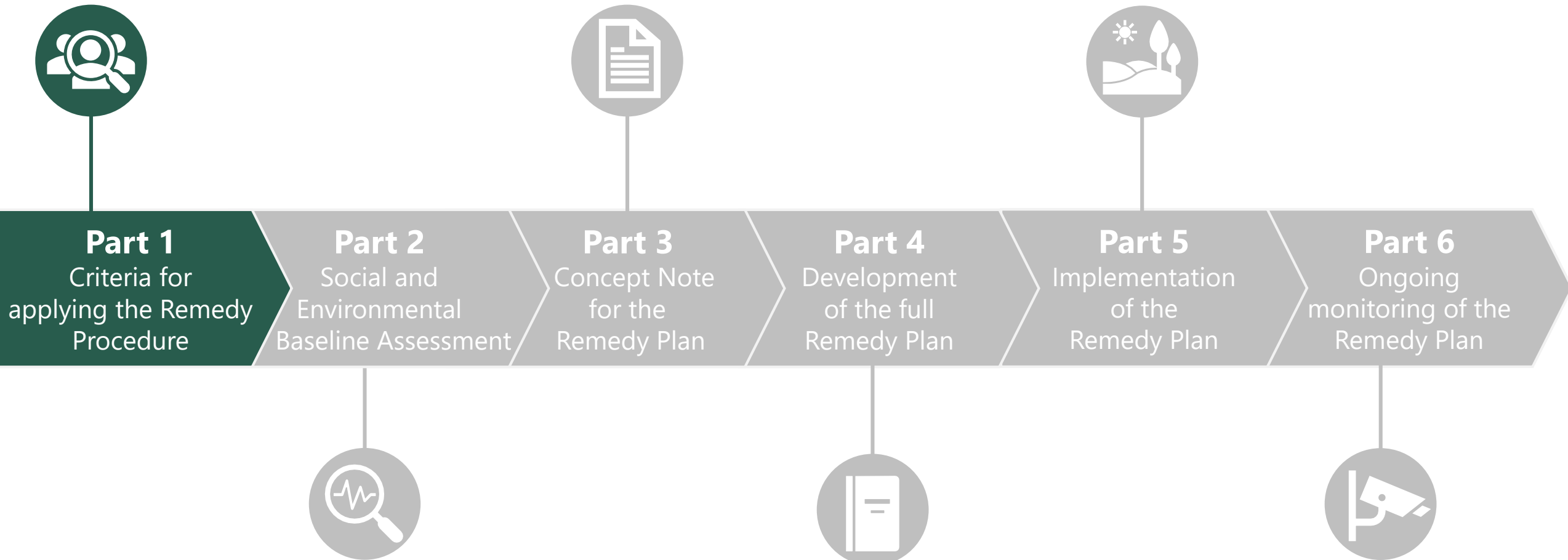
4. NEXT STEPS

5. OPEN DISCUSSIONS (40 Mins)

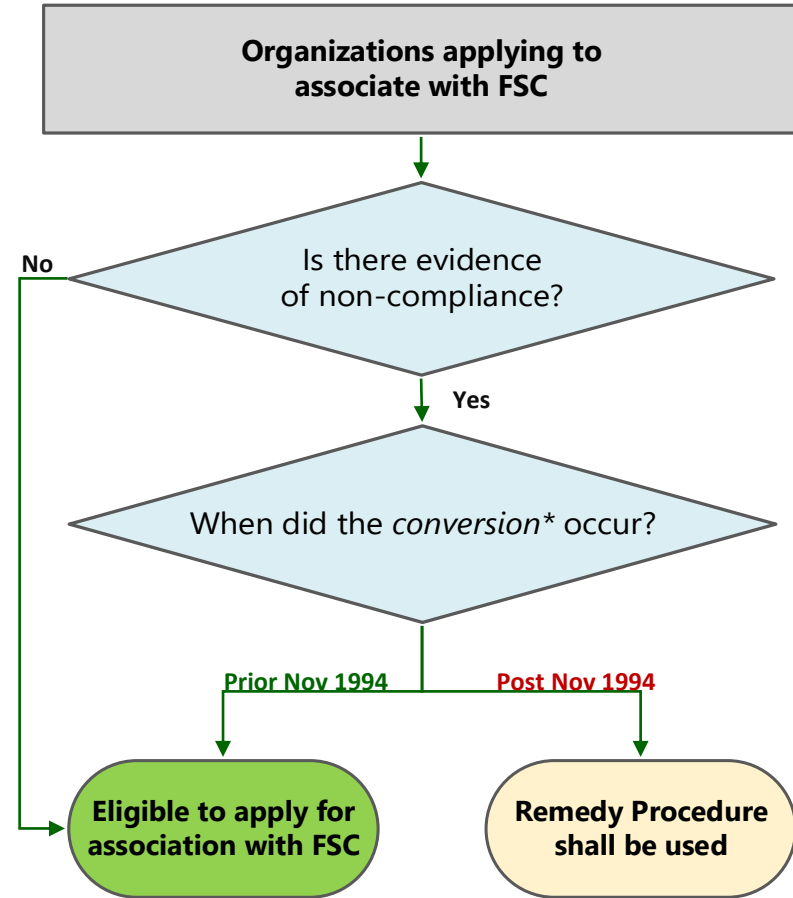
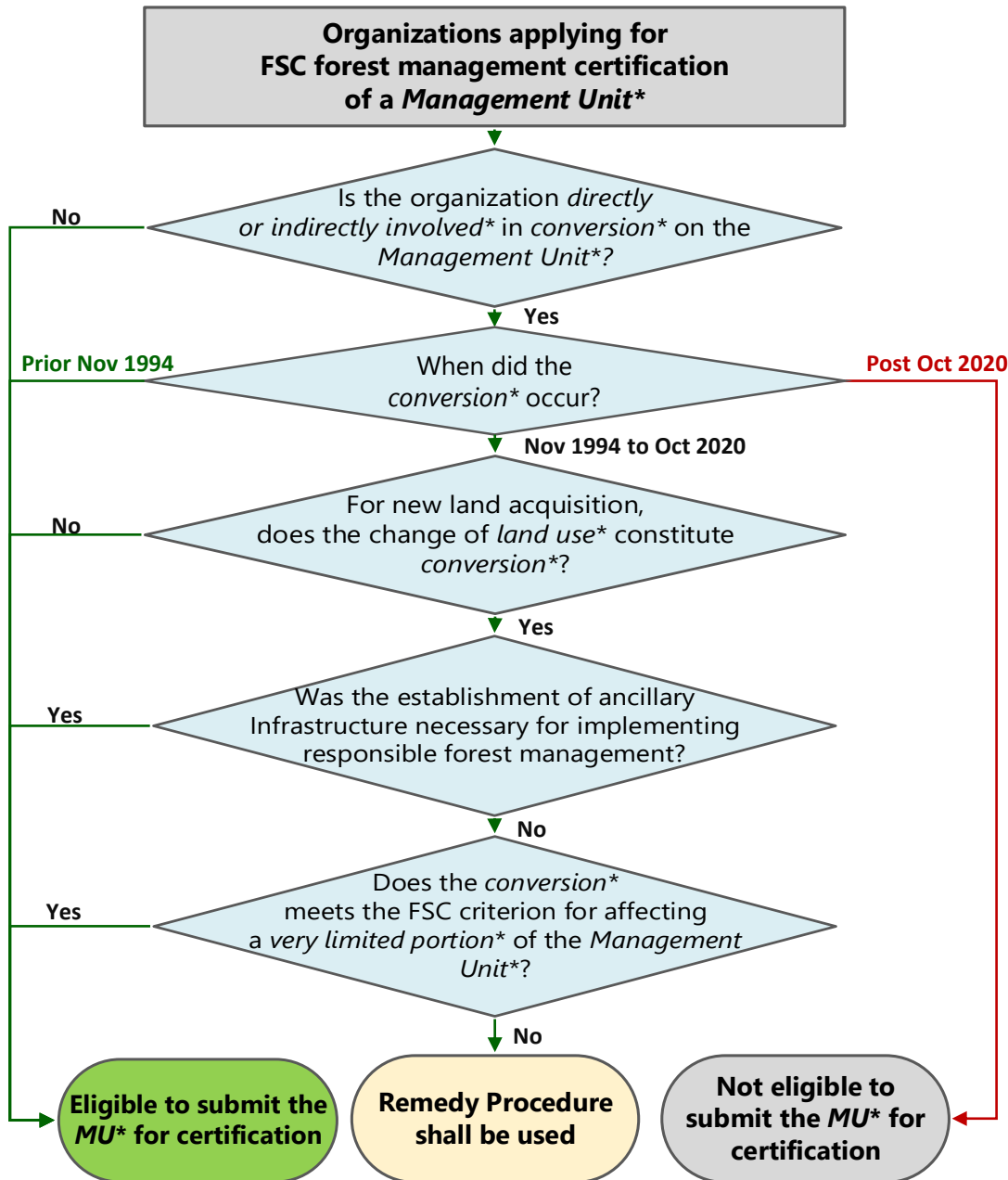
FSC CONVERSION REMEDY PROCEDURE



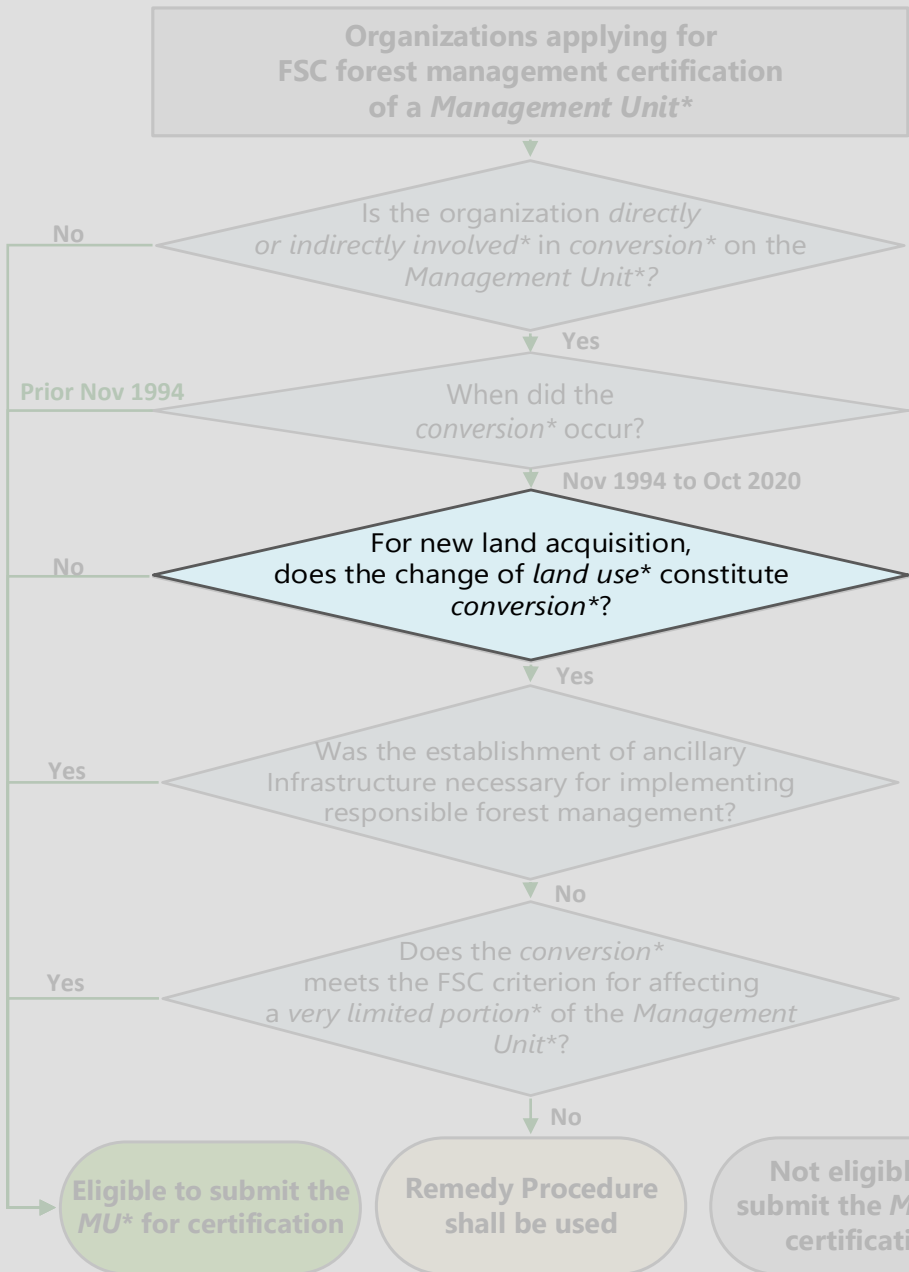
FSC CONVERSION REMEDY PROCEDURE



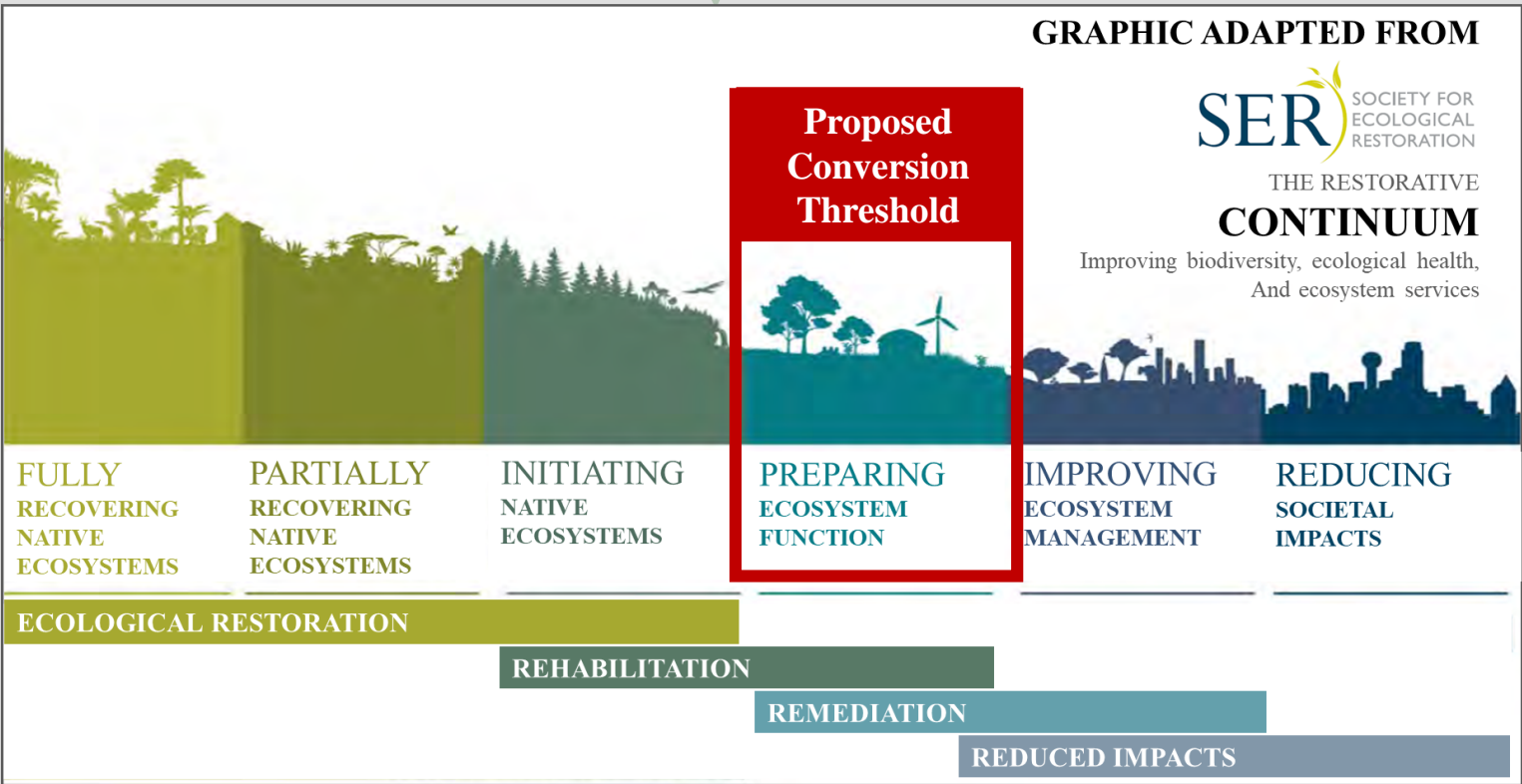
FSC CONVERSION REMEDY PROCEDURE: PART 1



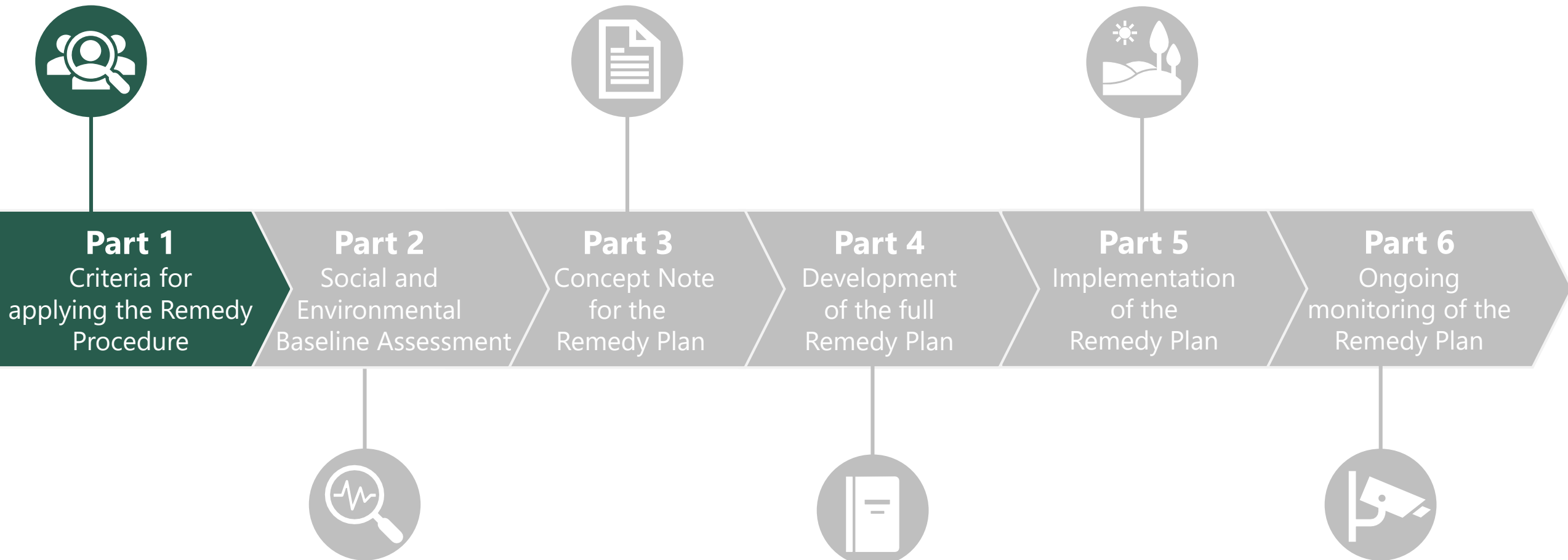
FSC CONVERSION REMEDY PROCEDURE: PART 1



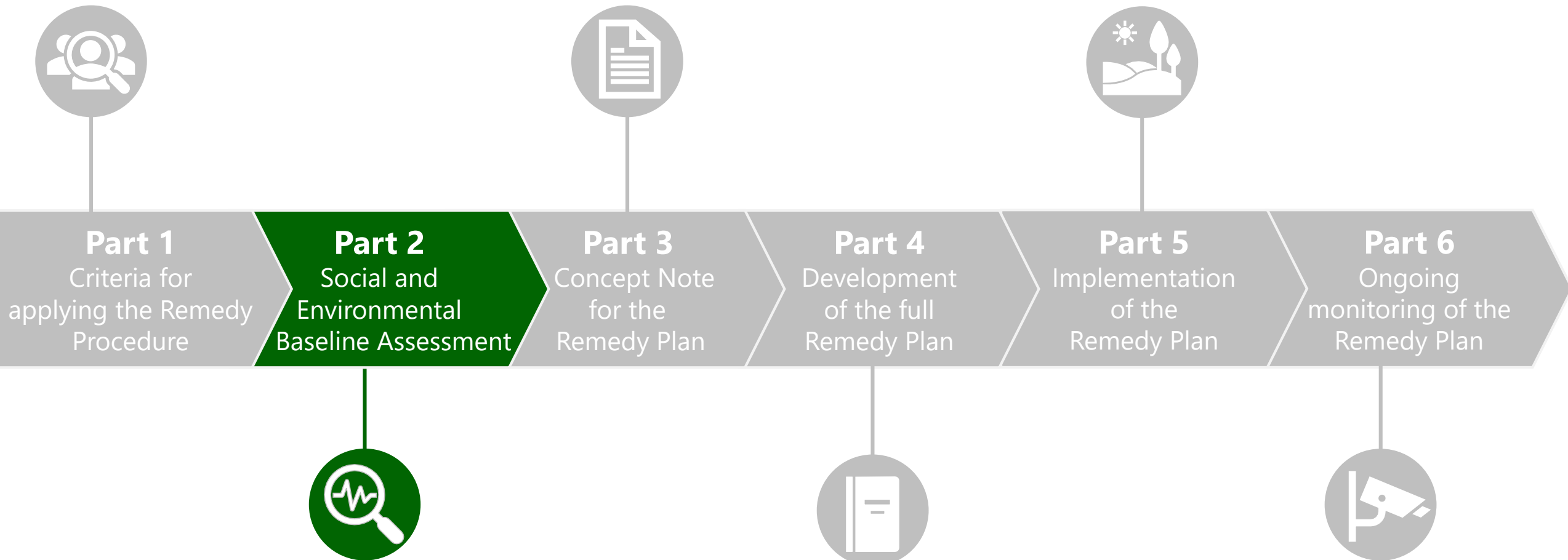
Organizations applying to associate with FSC



FSC CONVERSION REMEDY PROCEDURE



FSC CONVERSION REMEDY PROCEDURE



FSC CONVERSION REMEDY PROCEDURE: PART 2



Environmental aspects

- Forest types
- Forest condition
- Biodiversity
- Environmental values
- Successional phase
- Level of degradation
- Landscape context



Social aspects

- Tenure* and use rights
- Community needs
- Cultural values



Ecosystem services

PRIOR TO CONVERSION



Environmental aspects

- Land use and management classification
- Forest condition
- Biodiversity
- Environmental values
- Successional phase
- Level of degradation
- Degradation drivers
- Landscape context



Social aspects

- Tenure* and use rights
- Community needs
- Cultural values



Ecosystem services



POST TO CONVERSION

FSC CONVERSION REMEDY PROCEDURE: PART 2

04 IDENTIFY PRIORITY

- Priority activities
- Priority conflicts associated with conversion

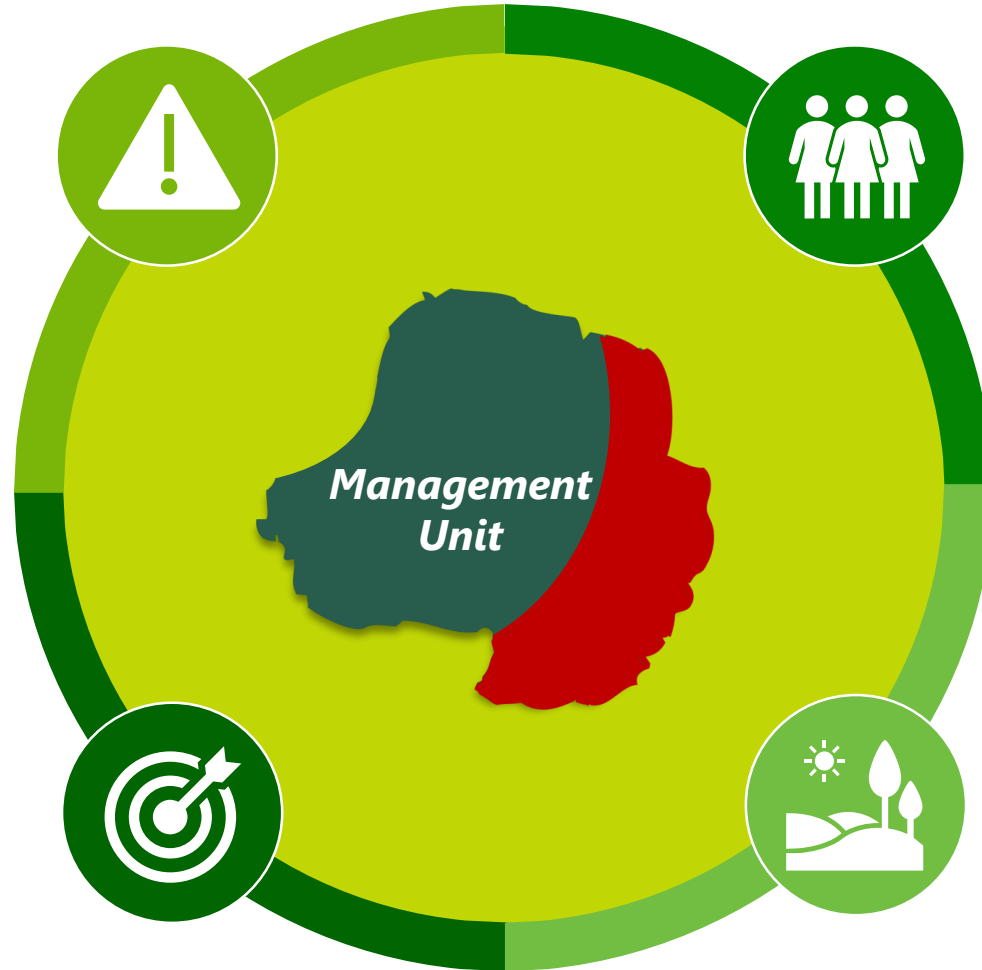
Conflict Resolution processes must be established and agreed together with the affected stakeholders.

03 SITE SELECTION

Maximum conservation outcomes and social benefits;

Locations should be prioritized in consecutive order:

- (1) in the converted area
- (2) within FMU
- (3) adjacent to FMU
- (4) within the landscape the FMU is located
- (5) within the province or country the FMU is located.



01 AFFECTED STAKEHOLDERS

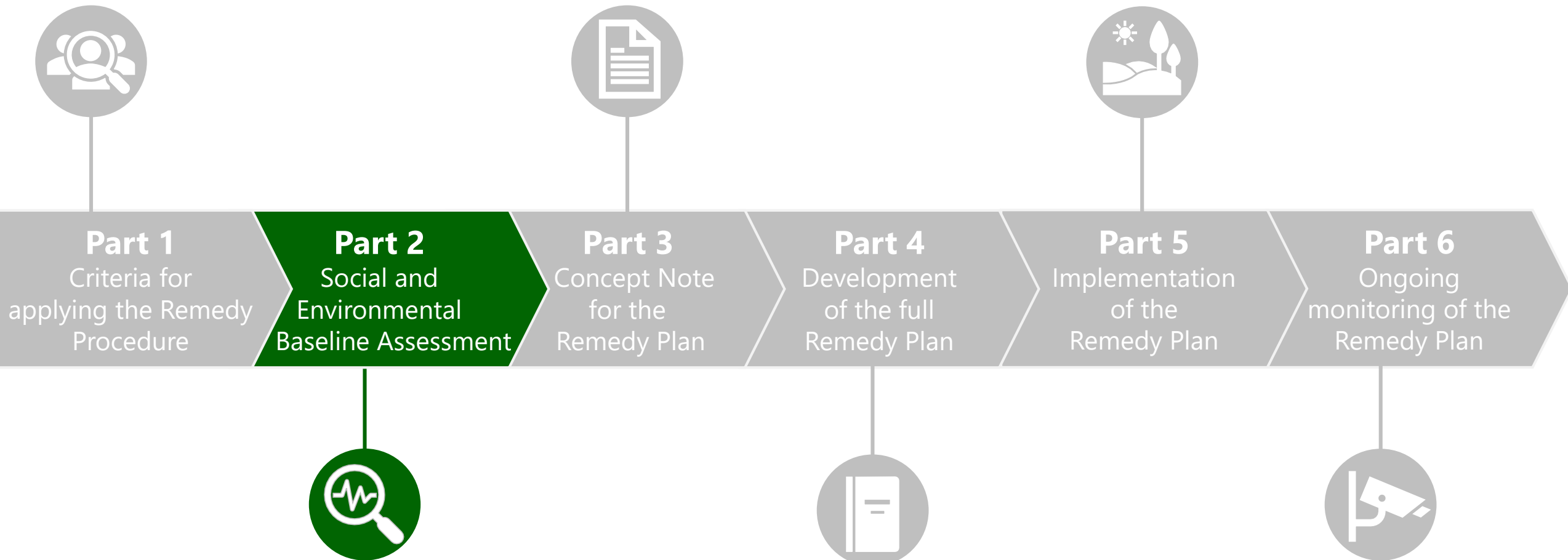
- Shall be made aware of their rights;
- Baseline and analysis on environmental harm as agreed with affected stakeholders and experts;
- Baseline and analysis on social harm as determined through FPIC process with affected stakeholders.
- Restitution actions as agreed with affected stakeholders

02 ENVIRONMENTAL REMEDY

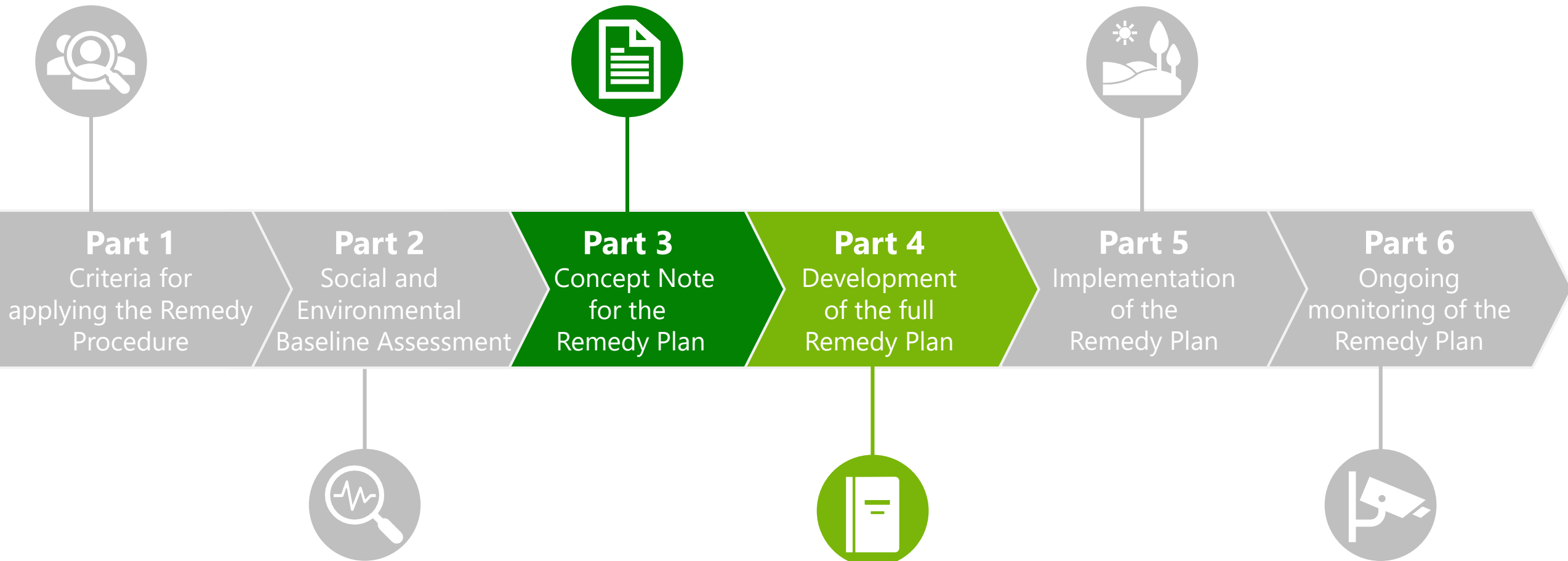
- Restoration;
- Reforestation;
- Enhancement;
- Preservation;
- Conservation;
- Substitution.

Remedy shall be proportionate and equivalent to the scale and harm caused by conversion.

FSC CONVERSION REMEDY PROCEDURE



FSC CONVERSION REMEDY PROCEDURE



PART 3 CONCEPT NOTE



- 1) Evaluation of resources;
- 2) Recommendations for the most effective remedy options;
- 3) Proposed timelines to achieve:
 - The initial implementation phase, including priority activities to be completed.
 - Progress against key objectives in the plan
 - Estimated full implementation of remedy plan
- 4) Organization implementing the remedy plan.

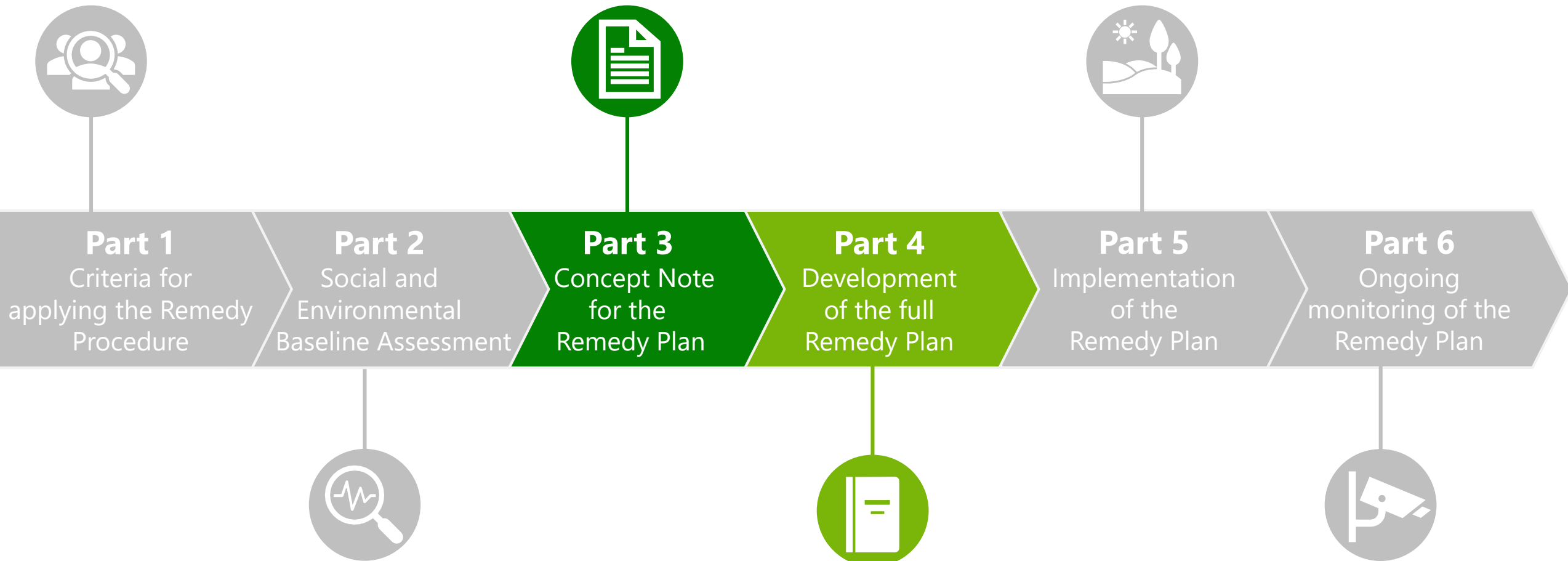
APPROVED
BY
COMPETENT
AUTHORITY

PART 4 FULL REMEDY PLAN

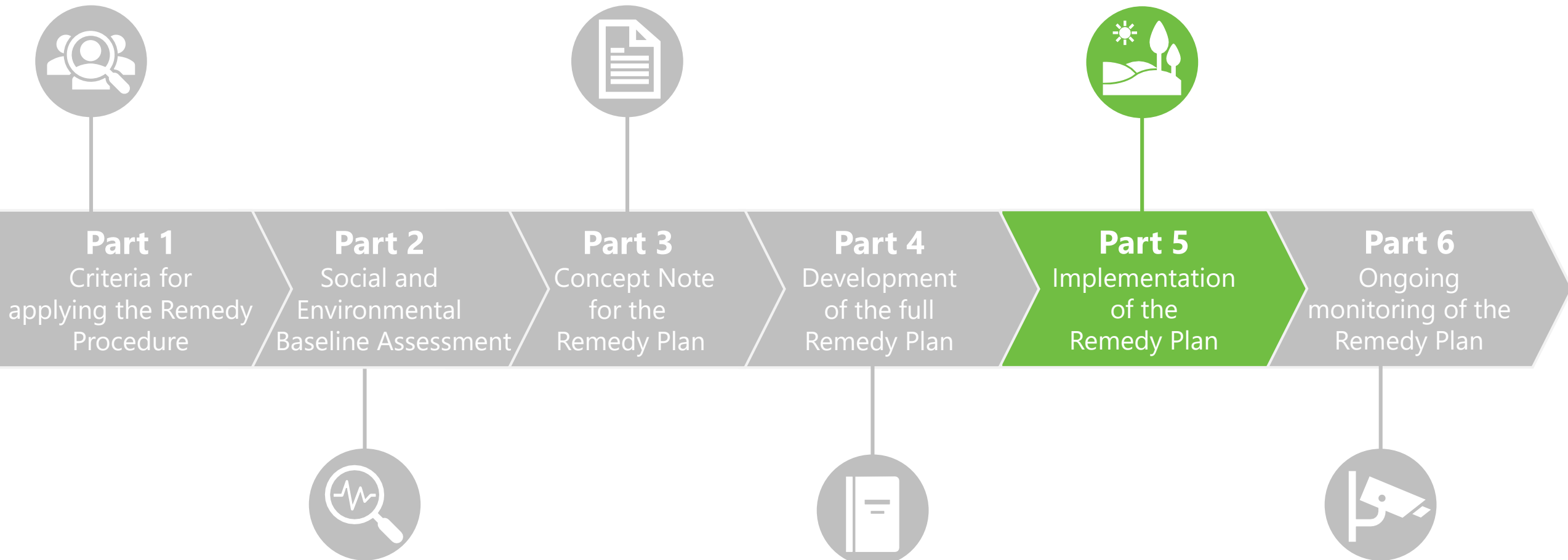


- 1) Each required action identified in consultation with local stakeholders;
- 2) Priority activities;
- 3) Timeframes and benchmarks, e.g. the initial implementation phase;
- 4) Evaluation of resources;
- 5) Identification of restoration reference models* and ecosystem attributes;
- 6) Parameters for monitoring;
- 7) Referencing and justifying best practice guidelines;
- 8) The plan shall be approved by affected stakeholders and experts.

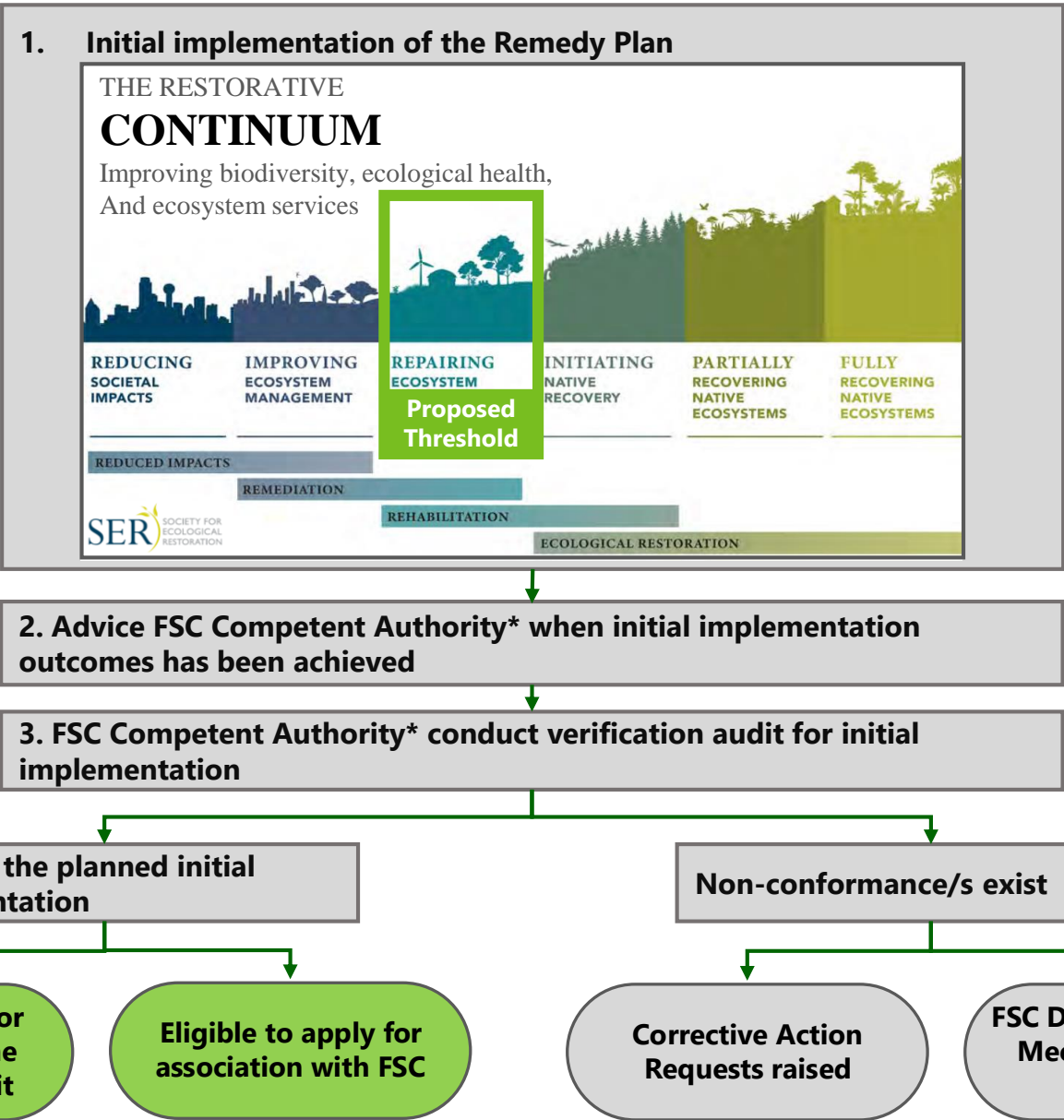
FSC CONVERSION REMEDY PROCEDURE



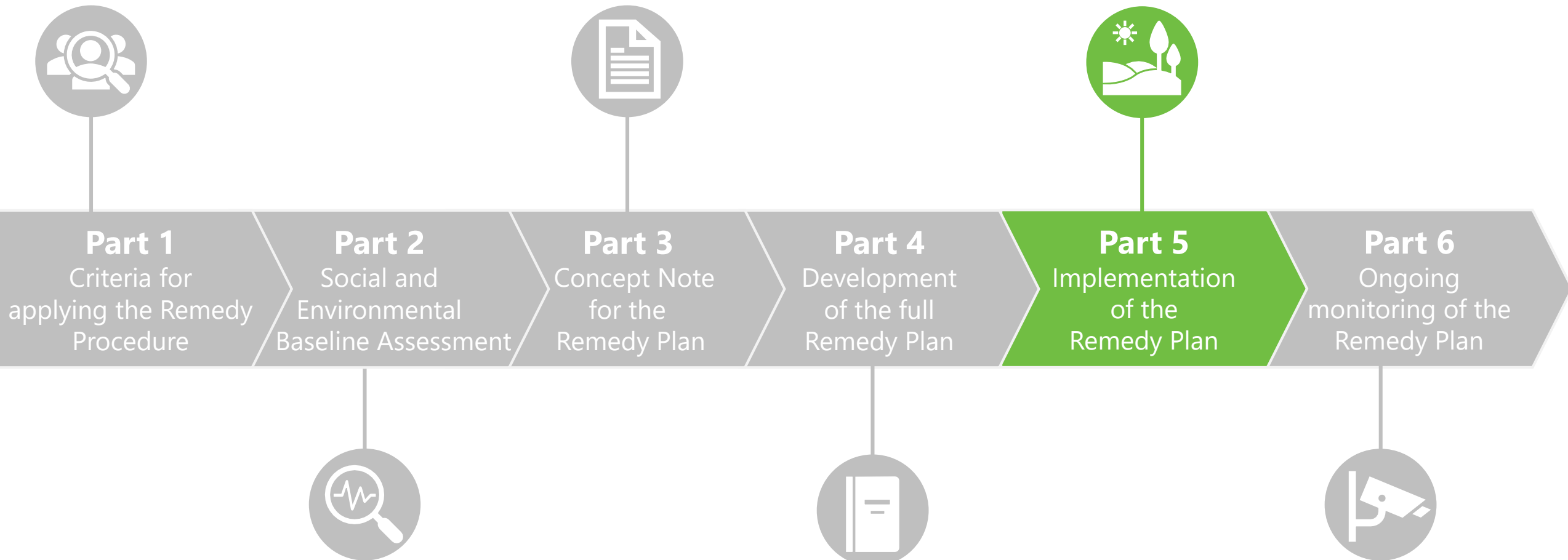
FSC CONVERSION REMEDY PROCEDURE



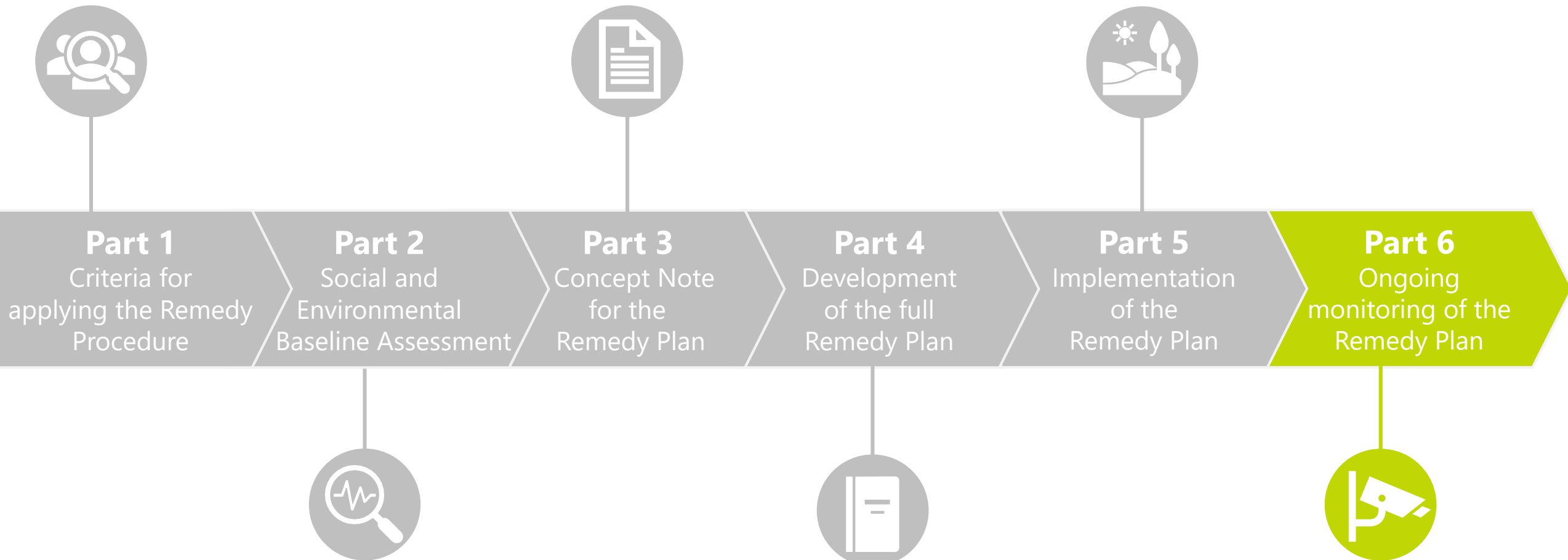
FSC CONVERSION REMEDY PROCEDURE: PART 5



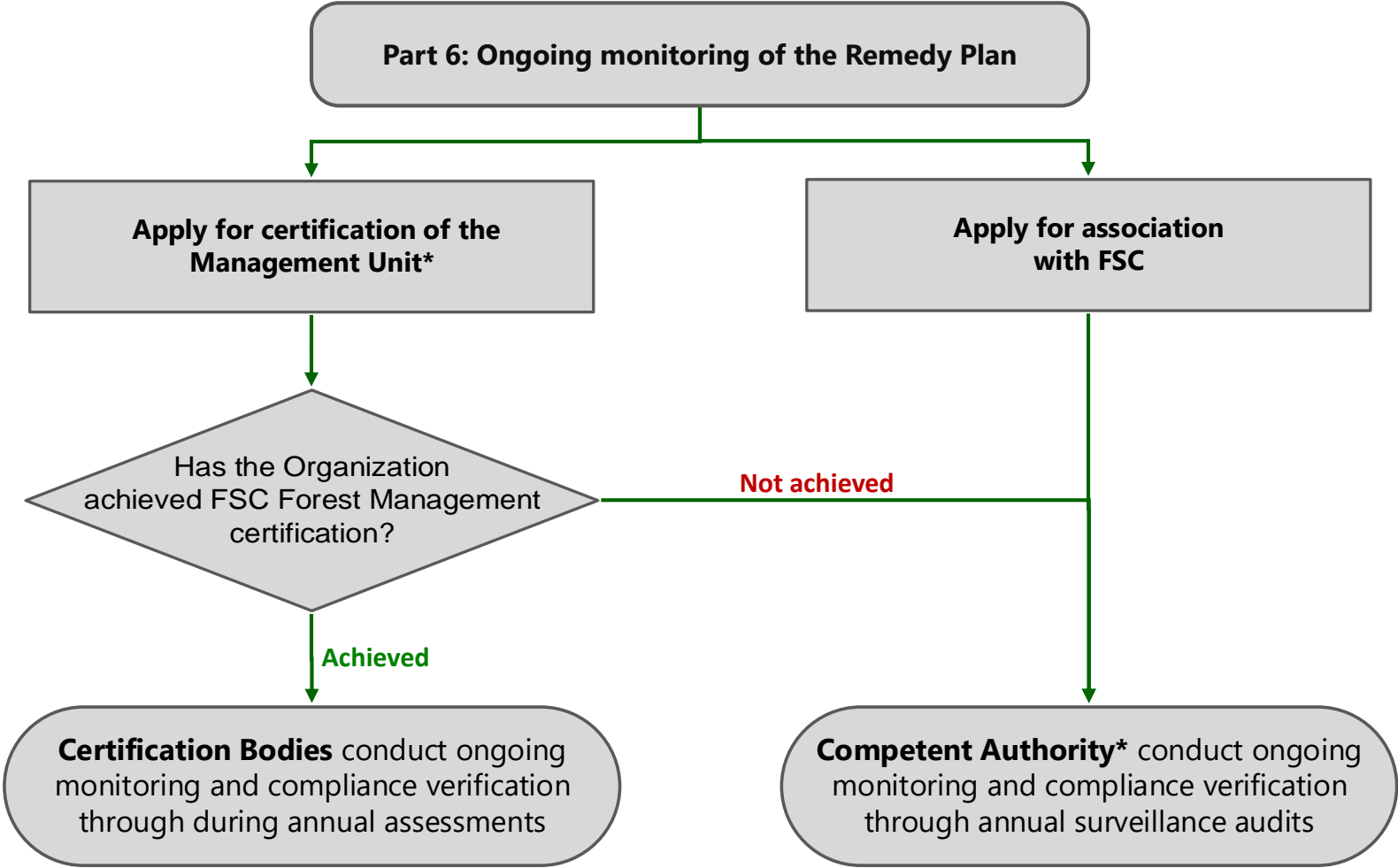
FSC CONVERSION REMEDY PROCEDURE



FSC CONVERSION REMEDY PROCEDURE



FSC CONVERSION REMEDY PROCEDURE: PART 6



FSC CONVERSION REMEDY PROCEDURE: PART 6

Part 1: Applicability criteria of the Remedy Procedure

Part 2: Social and environmental baseline assessment

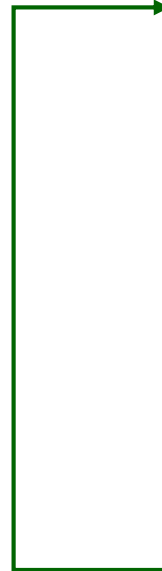
Part 3: Concept Note for the Remedy Plan

Part 4: Development of the Remedy Plan

Part 5: Implementation of Remedy Plan

Part 6: Ongoing monitoring of the Remedy Plan

**If organization ends
annual audits,
the re-entry point is
Part 3: concept note**



OVERVIEW

1. BACKGROUND INTRODUCTION

2. FIRST DRAFT OF FSC CONVERSION REMEDY PROCEDURE

3. INTRODUCTION OF THE PUBLIC CONSULTATION

4. NEXT STEPS

5. OPEN DISCUSSIONS (40 Mins)

[CONSULTATIONS](#)

[ABOUT](#)

[REGISTER](#)

[LOG IN](#)

PUBLIC CONSULTATION FOR FSC CONVERSION REMEDY PROCEDURE V1-0 D1-0

[Background: Motion 7 & its implementation](#)

[Part 3: Concept Note for the Remedy Plan](#)

[Introduction on FSC Conversion Remedy Procedure](#)

[Part 4: Development of the Remedy Plan](#)

[FSC Conversion Remedy Procedure: Terms & Definitions](#)

[Part 5: Implementation of Remedy Plan](#)

[Part 1: Applicability criteria of the Remedy Procedure](#)

[Part 6: Ongoing monitoring of the Remedy Plan](#)

[Part 2: Social and environmental baseline assessment](#)

[Closing questions](#)

[PARTICIPATE](#)

OVERVIEW

1. BACKGROUND INTRODUCTION

2. FIRST DRAFT OF FSC CONVERSION REMEDY PROCEDURE

3. INTRODUCTION OF THE PUBLIC CONSULTATION

4. NEXT STEPS

5. OPEN DISCUSSIONS (40 Mins)

NEXT STEPS



APRIL

PUBLIC CONSULTATION
2 Webinars



MAY

PUBLIC CONSULTATION
2 Webinars



JUNE

WG ONLINE MEETINGS
Analyze Feedbacks



JULY

2nd IN PERSON MEETING
Develop second draft



Forest Stewardship Council®
FSC® International Center

Adenauerallee 134, 53113 Bonn, Germany

T +49 (0) 228 367 66-0

F +49 (0) 228 367 66-65

FSC International Center © All rights reserved

FSC® F000100

www.fsc.org

OVERVIEW

1. BACKGROUND INTRODUCTION

2. FIRST DRAFT OF FSC CONVERSION REMEDY PROCEDURE

3. INTRODUCTION OF THE PUBLIC CONSULTATION

4. NEXT STEPS

5. OPEN DISCUSSIONS (40 Mins)